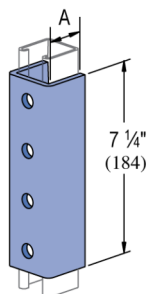
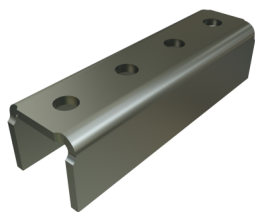


P1377, P4377, P5077 & P5577 - 4 Hole U-Shaped Splice

Atkore's U-shape fittings offer strong, stable support for parallel channel connections and perpendicular bracing. With a wide range of configurations and hole patterns, they provide reliable alignment and flexibility—no matter the application—while integrating seamlessly with Atkore and Power-Strut systems.

Features

- Steel: ASTM A1011 SS GR 33
- Splice strut channel end-to-end
- High capacity for heavy load requirements



Catalog Number	Material Type	Surface Finish	Part Weight (lb/ea)	Standard Package Weight (lb)
P5077 DF	Steel	Defender	3.9	39
P1377 DF	Steel	Defender	2.77	27.7
P4377 DF	Steel	Defender	1.86	18.6
P1377 EG	Steel	Electrogalvanized	2.65	26.5
P4377 EG	Steel	Electrogalvanized	1.76	17.6
P5577 EG	Steel	Electrogalvanized	3.1	31
P5077 EG	Steel	Electrogalvanized	3.9	39
P5077 GR	Steel	Green E-Coat	3.9	39
P1377 GR	Steel	Green E-Coat	2.65	26.5
P4377 GR	Steel	Green E-Coat	1.76	17.6
P5577 GR	Steel	Green E-Coat	3.1	31
P4377 HG	Steel	Hot-Dip Galvanized	1.86	18.6
P5077 HG	Steel	Hot-Dip Galvanized	3.9	39
P1377 HG	Steel	Hot-Dip Galvanized	2.77	27.7
P1377 PL	Steel	Plain/Oil	2.65	26.5
P4377 PL	Steel	Plain/Oil	1.76	17.6
P1377 SS	Stainless Steel - 304		2.65	26.5
P4377 ZD	Steel	Zinc Dichromate	1.76	17.6
P1377 ZD	Steel	Zinc Dichromate	2.65	26.5